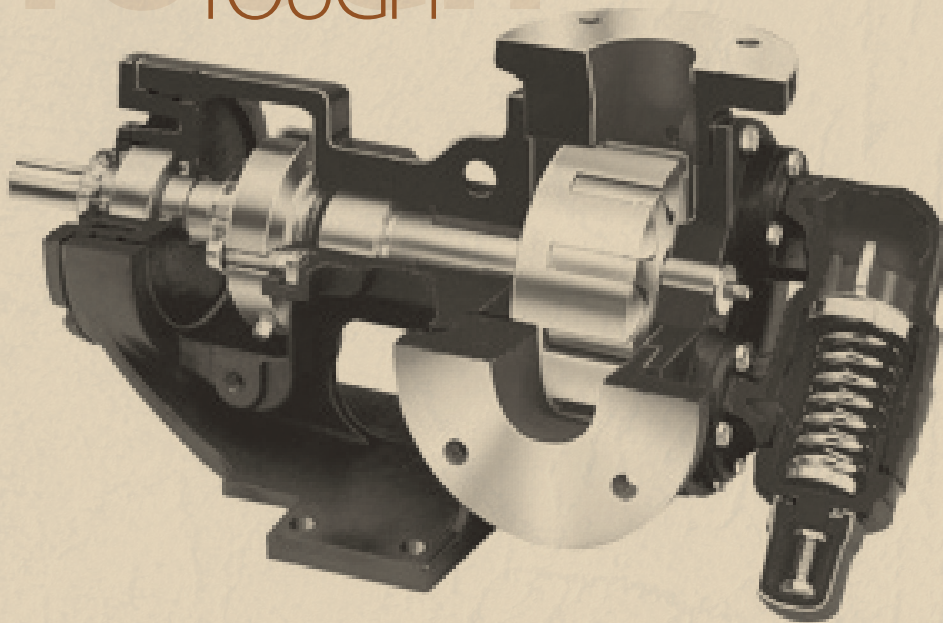


N  M A D TM

**GEAR
PUMPS**

TOUGH

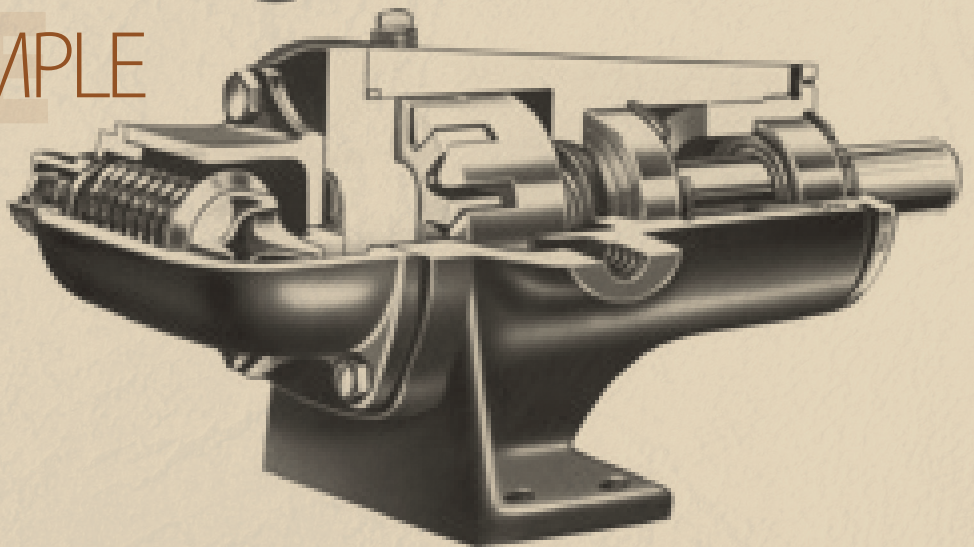
TOUGH



NO BOUNDARIES TM

SIMPLE

SIMPLE



COST EFFECTIVE

COST EFFECTIVE



NOMAD GEAR PUMPS

California-based JDA GLOBAL LLC, the world's largest provider of after-market diaphragm pump products, in conjunction with the world's largest after-market gear pump manufacturing contractor, is proud to offer NOMAD GEAR PUMPS, featuring a proven positive displacement design with intermeshing rotor and idler. The NOMAD GEAR PUMP features a retrofittable design when compared to the world's largest manufacturer of internal gear pumps. Thus, ALL NOMAD GEAR PUMP PARTS are interchangeable with the leading brand. The NOMAD GEAR PUMP product features cast housings in 7 connection port sizes, available with packing or mechanical seals. Furthermore, JDA GLOBAL's procurement hubs in India, China and Mexico ensure low cost, high quality products.

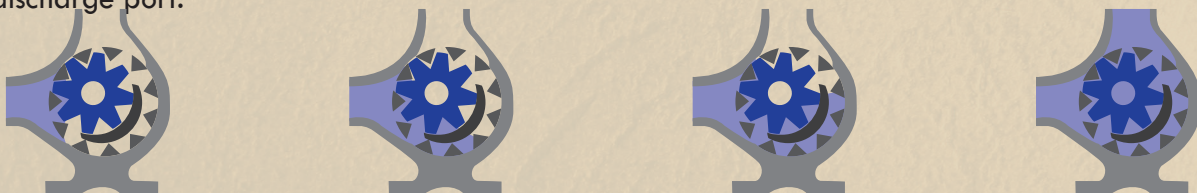


INTERNAL GEAR

Internal gear pumps feature positive displacement design to handle high viscosity liquids. They are equipped with casings that can be positioned to meet common piping configurations, while featuring only two mobile parts for ease of maintenance.

HOW IT WORKS

Liquid enters the suction port between the rotor and idler teeth. Liquid travels through the pump between the teeth of the “gear-within-a-gear” principle. The crescent shape divides the liquid and acts as a seal between the suction and discharge ports. The pump head is now nearly flooded, just prior to forcing the liquid out of the discharge port. Intermeshing gears of the idler and rotor form locked pockets for the liquid which assures volume control. Rotor and idler teeth mesh completely to form a seal equal distant from the discharge and suction ports. This seal forces the liquid out of the discharge port.



NG-SERIES

NG-124A/4124A

The threaded bearing housing, with its large diameter allows for cartridge mechanical seal installation (except on NG-AK and NG-AL models).

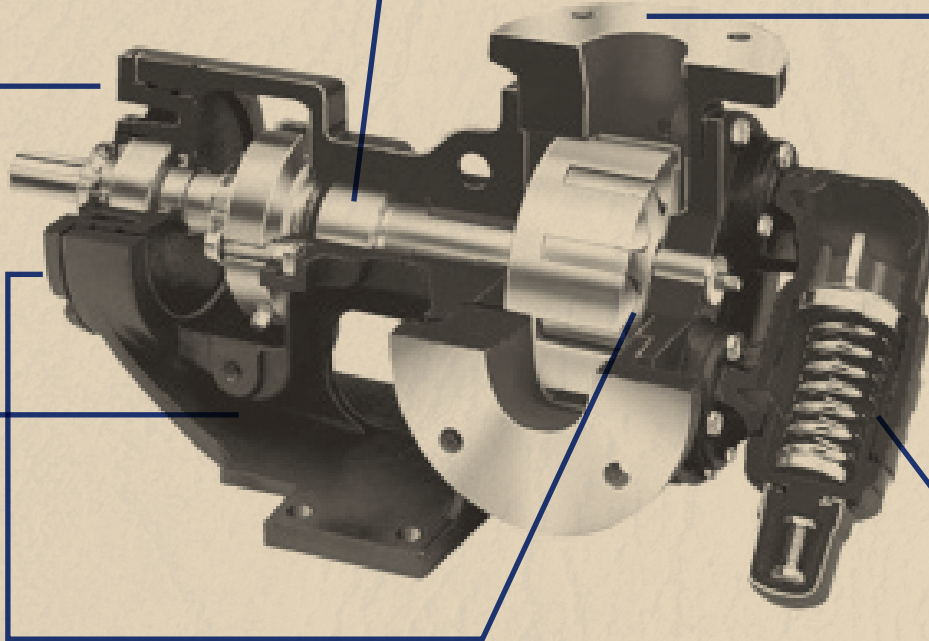
The stuffing box accepts packing, numerous component mechanical seals, or a wide variety of cartridge seals (except on NG-AK and NG-AL models)

The casing can be rotated in 45° increments permitting eight different port positions.

One-piece cast bracket provides rigid foundation to maximize seal and bearing life.

Rotor end clearance can be adjusted to compensate for wear or for higher temperatures or viscosities by rotating the threaded bearing housing.

Internal relief valve standard to protect the pump.

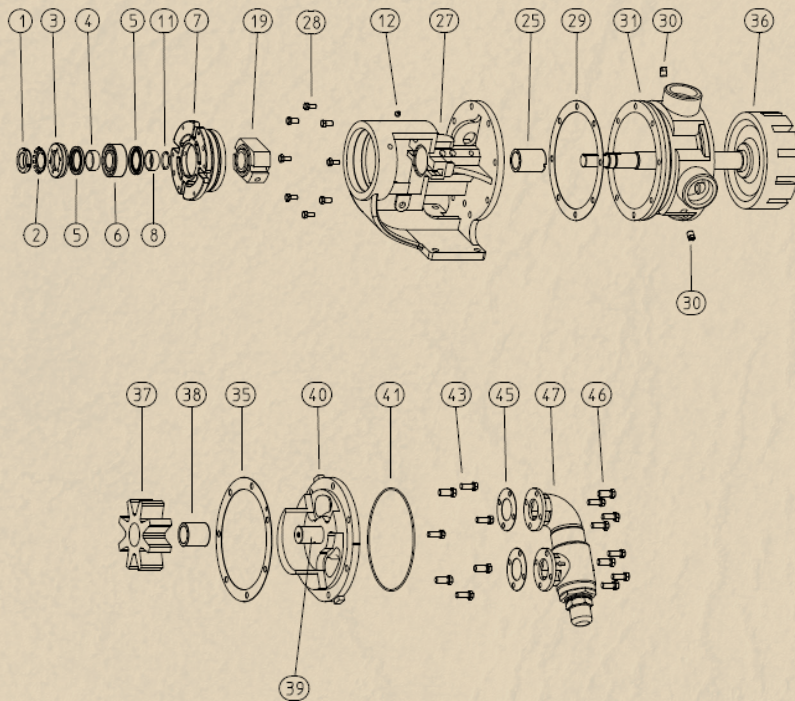


FEATURES

1. The stuffing box on all sizes accepts packing, component single mechanical seals, or cartridge seals without modifications.
2. Bearing housing provides easy rotor end clearance adjustment to compensate for viscosity or wear.
3. One-piece Bracket minimizes deflection on shaft.
4. Positive Displacement, Internal Gear pumping principle.
5. Low maintenance cost.
6. Main applications: These pumps are built to continuous or intermittent duty for such applications as circulating, transferring, or service in general industrial, petroleum uses.

GENERAL EXPLODED VIEW

NG-124A/4124A



ITEM	DESCRIPTION
1	Locknut
2	Lockwasher
3	End Cap for Bearing Housing
4	Bearing Spacer Collar (Outer)
5	Lip Seal
6	Ball Bearing
7	Bearing Housing
8	Bearing Spacer Collar (Inner)
11	Ring Half Round
12	Grease Fitting
19	Mechanical Seal
25	Bracket Bushing
27	Bracket
28	Capscrew for Bracket
29	Bracket Gasket
30	Pipe Plug
31	Casing
35	Head Gasket
36	Rotor and Shaft
37	Idler
38	Idler Bushing
39	Idler Pin
40	Head
43	Capscrew for plain or valve type Head
46	Capscrew for valve
45	Relief valve Gasket
47	Relief valve

MATERIALS OF CONSTRUCTION

NG SERIES NG-124A/4124A

Bracket	Casing	Head	Rotor (**)	Idler (**)	Idler Pin/ Rotor Shaft
Cast Iron	Cast Iron	Cast Iron	Cast Iron	Cast Iron	Carbon Steel

Bushings	Packing	Mechanical Seal	Relief Valve
Bronze / Carbon Graphite	Teflon Graphite	Buna / Viton (optional)	Iron

(**) Depends on operating conditions material can be changed to carbon steel.

GENERAL OPERATING DATA

NG SERIES NG-124A/4124A

Based on 750 SSU and S.G. 1.0

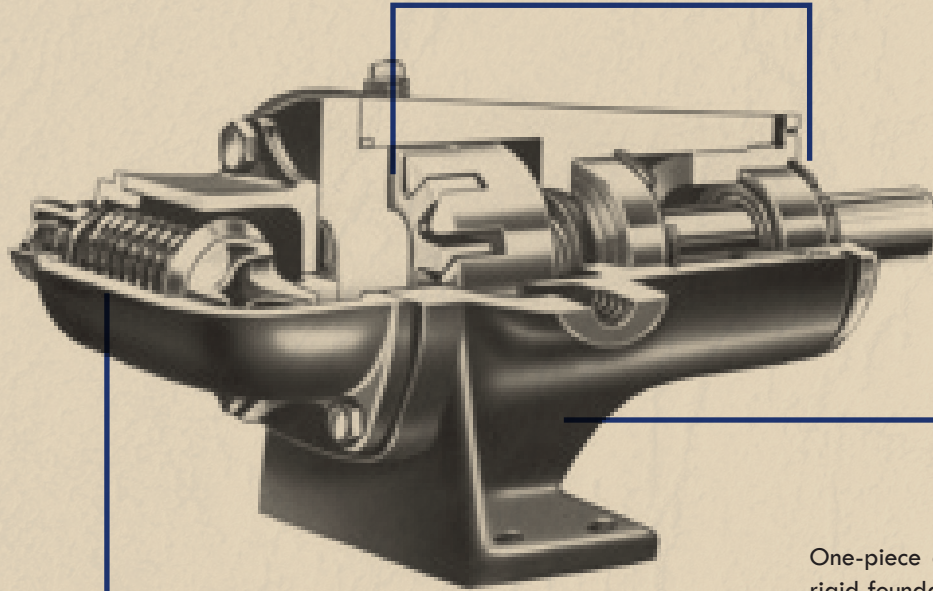
	NG-H	NG-HL
Port Size (in)	1 ½	1 ½
Flow (GPM)	17	32
Discharge Pressure (PSI)	200	200
Speed (RPM)	1750	1750

	NG-K	NG-KK	NG-L / NG-LQ	NG-LL
Port Size (in)	2	2	2 ½	3
Flow (GPM)	79	105	146	149
Discharge Pressure (PSI)	200	200	200	200
Speed (RPM)	780	780	640	520

	NG-LS	NG-Q	NG-QS
Port Size (in)	3	4	6
Flow (GPM)	209 / 137	300 / 200	470 / 315
Discharge Pressure (PSI)	150 / 200	150 / 200	150 / 200
Speed (RPM)	640 / 420	520 / 350	520 / 350

NG-4195 SERIES

Rotor end clearance can be adjusted to compensate for wear or for higher temperatures or viscosities by rotating the threaded bearing housing.



Internal relief valve standard to protect the pump.

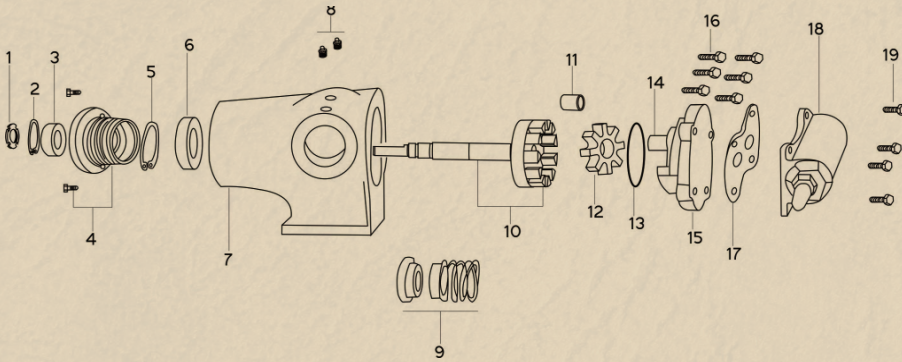
One-piece cast bracket provides rigid foundation to maximize seal and bearing life.

FEATURES

1. All sizes of NG-4195 pumps are furnished with single mechanical seal.
2. The smaller size pumps (NG-GG4195, NG-HL4195 and NG-HJ4195) can be directly connected to either 1800 or 1200 RPM motors. The rest of the sizes can be directly connected to 1200 RPM motors.
3. Main applications: These pumps are built to continuous or intermittent duty for such applications as circulating, transferring, or service in general industrial, petroleum uses.

GENERAL EXPLODED VIEW

NG-4195 SERIES



ITEM	DESCRIPTION
1	Locknut
2	Snap Ring, Outer
3	Ball Bearing, Outer
4	Bearing Housing with Setscrews
5	Snap Ring, Inner
6	Ball Bearing, Inner
7	Casing
8	Pipe Plug
9	Mechanical Seal
10	Rotor and Shaft
11	Idler Bushing
12	Idler and Bushing
13	O-Ring Gasket for Head
14	Idler Pin, Plain
15	Head and plain Idler Pin
16	Cap screw for Plain head
17	Relief Valve Gasket
18	Internal Relief Valve
19	Cap screw for Valve

MATERIALS OF CONSTRUCTION

NG-4195 SERIES

Casing	Head	Rotor (**)	Idler (**)	Idler Pin/ Rotor Shaft	Bushings	Mechanical Seal	Relief Valve
Cast Iron	Cast Iron	Cast Iron	Cast Iron	Carbon Steel	Carbon Graphite	Buna / Viton (optional)	Iron

(**) Depends on operating conditions material can be changed to carbon steel.

GENERAL OPERATING DATA

NG-4195 SERIES

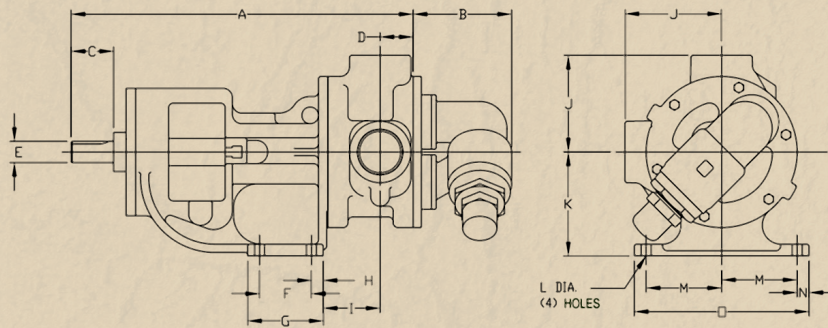
Based on 100 SSU and S.G. 1.0

	NG-GG4195	NG-HJ4195	NG-HL4195
Port Size (in)	1	1 ½	1 ½
Flow (GPM)	10	20	30
Pressure (PSI)	100	100	100
Speed (RPM)	1800	1800	1800

	NG-AS4195	NG-AK4195	NG-AL4195
Port Size (in)	2 ½	2 ½	3
Flow (GPM)	35	50	75
Pressure (PSI)	100	100	100
Speed (RPM)	1200	1200	1200

DIMENSIONS

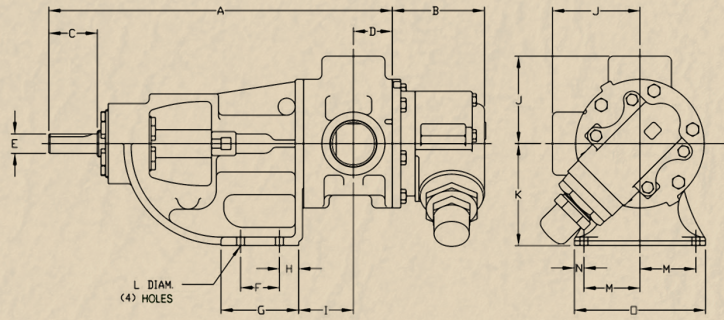
NG-4195 SERIES



Model	A	B	C	D	E (DIA)	E (keyway)	F	G
NG-H	13.25	2.85	1.62	1.19	0.75	0.19 x 0.09	2.25	3.5
NG-HL	13.25	2.85	1.62	1.19	0.75	0.19 x 0.09	2.25	3.5
NG-K	18.12	5.25	2.25	1.75	1.125	0.25 x 0.12	2.75	4.0
NG-KK	18.12	5.25	2.25	1.75	1.125	0.25 x 0.12	2.75	4.0
NG-L	19.62	5.43	2.25	1.75	1.125	0.25 x 0.12	4.0	5.38

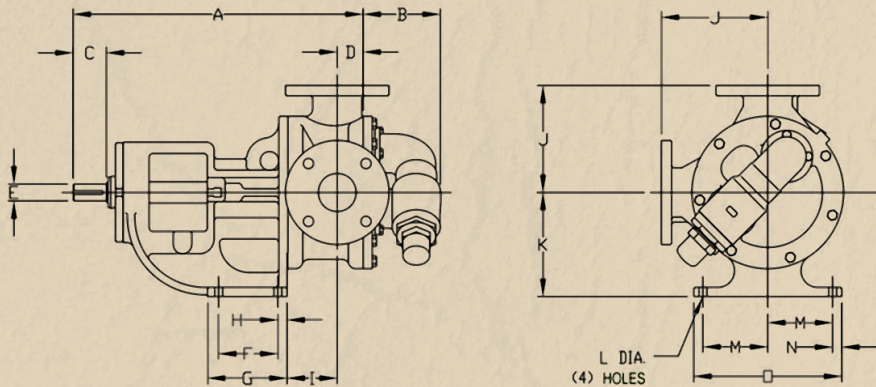
Model	H	I	J	K	L	M	N	O
NG-H	0.62	3.38	3.0	3.5	0.47	2.75	0.62	6.75
NG-HL	0.62	3.38	3.0	3.5	0.47	2.75	0.62	6.75
NG-K	0.62	3.0	5.12	5.5	0.53	4.0	0.62	9.25
NG-KK	0.62	3.0	5.12	5.5	0.53	4.0	0.62	9.25
NG-L	0.62	3.38	6.5	7.0	0.53	4.38	0.62	10.0

Dimensions in inches



Model	A	B	C	D	E (DIA)	E (keyway)	F	G
NG-AK	17.68	4.8	2.5	2.0	1.0	0.25 x 0.12	2.0	4.0
NG-AL	17.68	4.8	2.5	2.0	1.0	0.25 x 0.12	2.0	4.0

Model	H	I	J	K	L	M	N	O
NG-AK	1.0	2.81	4.5	5.25	0.41	2.88	0.5	6.75
NG-AL	1.0	2.81	4.5	5.25	0.41	2.88	0.5	6.75



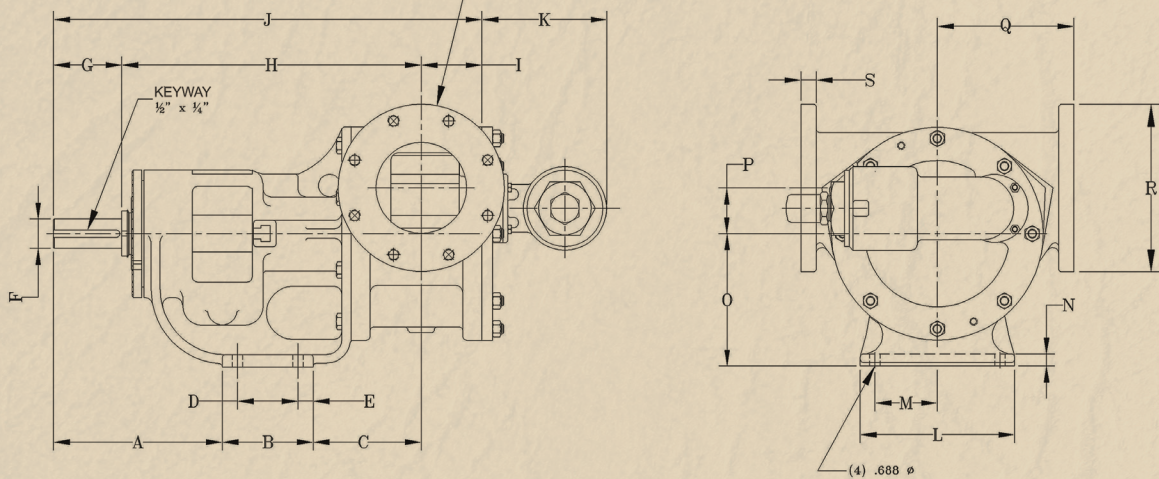
Model	A	B	C	D	E (DIA)	E (keyway)	F	G
NG-LQ	19.62	5.43	2.25	1.75	1.125	0.25 x 0.12	4.0	5.38
NG-LL	20.12	5.43	2.25	2.25	1.125	0.25 x 0.12	4.0	5.38
NG-NG-LS	21.69	5.43	3.5	2.44	1.44	0.38 x 0.19	4.0	5.38
NG-Q	26.75	8.25	4.5	3.0	1.94	0.50 x 0.25	4.0	6.0

Model	H	I	J	K	L	M	N	O
NG-LQ	0.62	3.38	7.19	7.0	0.53	4.38	0.62	10.0
NG-LL	0.62	3.38	7.19	7.0	0.53	4.38	0.62	10.0
NG-LS	0.62	4.75	7.19	7.0	0.53	4.38	0.62	10.0
NG-Q	1.0	6.62	8.25	8.75	0.69	4.12	0.75	10.0

Dimensions in inches

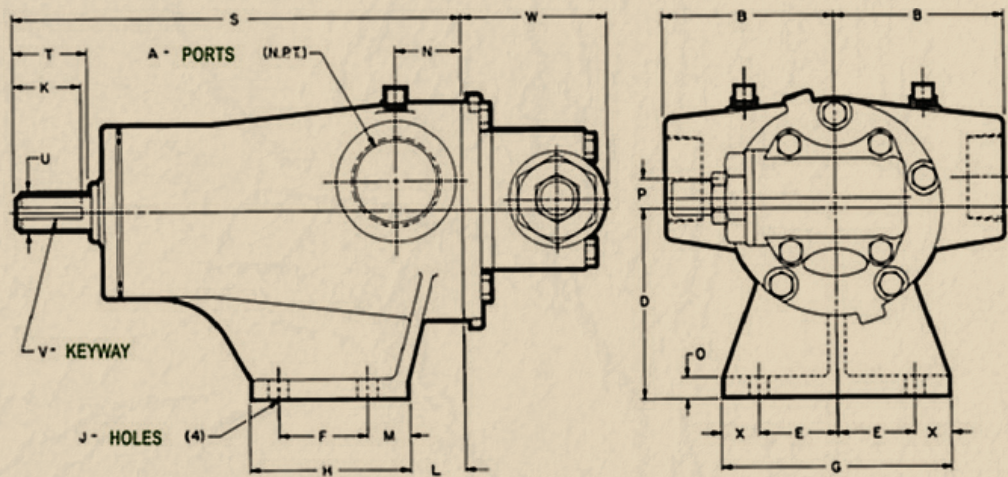
NOTE: STUDS AND NUTS
NOT SHOWN

FLANGE PORTS 6" Φ
ANSI # 125



Model	A	B	C	D	E	F	G	H	I	J
NG-QS	11.13	6.00	7.12	4.00	1.00	1.93	4.50	19.75	4.00	28.25

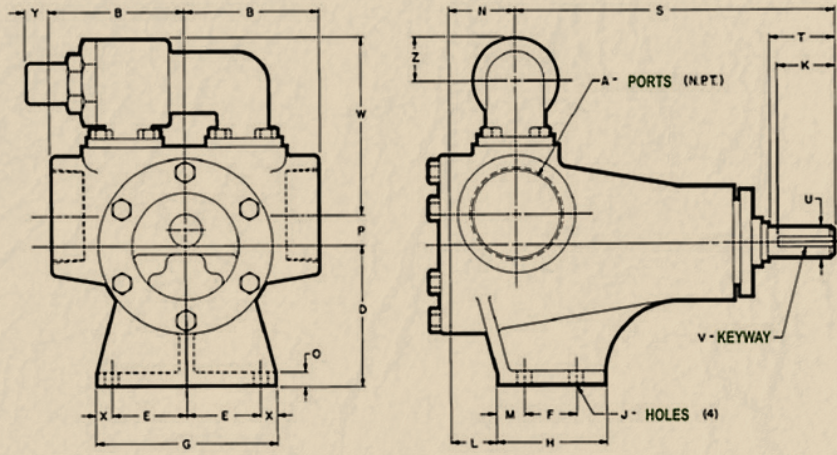
Model	K	L	M	N	O	P	Q	R	S
NG-QS	8.25	10.00	4.12	0.80	8.75	3.00	9.00	11.00	1.0



Model	A	B	D	E	F	G	H	J	K	L
NG-GG4195	1	2.75	2.75	1.62	1.31	4.0	2.44	0.34	0.94	0.03
NG-HJ4195	1 1/2	3.75	4.12	1.75	2.0	5.0	3.5	0.41	1.5	1.25
NG-HL4195	1 1/2	3.75	4.12	1.75	2.0	5.0	3.5	0.41	1.5	1.25

Model	M	N	O	P	S	T	U	V	W	X
NG-GG4195	0.66	1.21	0.31	0.62	7.31	1.12	0.5	FLAT	2.66	0.38
NG-HJ4195	0.88	1.5	0.44	0.62	10.0	1.62	0.75	0.19 x 0.09	3.28	0.75
NG-HL4195	0.88	1.5	0.44	0.62	10.0	1.62	0.75	0.19 x 0.09	3.28	0.75

Dimensions in inches



Model	A	B	D	E	F	G	H	J	K	L	M
NG-AS4195	2 ½	5.0	5.25	2.88	2.0	6.75	4.0	0.41	2.25	1.25	1.0
NG-AK4195	2 ½	5.0	5.25	2.88	2.0	6.75	4.0	0.41	2.25	1.25	1.0
NG-AL4195	3	5.0	5.25	2.88	2.0	6.75	4.0	0.41	2.25	1.75	1.0

Model	N	O	P	S	T	U	V	W	X	Y	Z
NG-AS4195	2.0	0.44	1.12	12.12	2.5	1.0	0.25 x 0.12	7.0	0.5	1.0	1.72
NG-AK4195	2.0	0.44	1.12	12.12	2.5	1.0	0.25 x 0.12	7.0	0.5	1.0	1.72
NG-AL4195	2.5	0.44	1.12	12.12	2.5	1.0	0.25 x 0.12	7.0	0.5	1.0	1.72

Dimensions in inches



A JDA Global Company

1351 Park Ave., Suite 104
Redlands, CA USA 92373
(909) 798-9532

N  M A D TM



NO BOUNDARIES TM